

Mrs. Diana Blank-Torres (Kyle Economic  
Development Director of Economic Development)  
**Web Site:** www.kyleed.com  
**Email:** Kyle-ED@cityofkyle.com  
**Phone Number:** (512) 262-3926

## Bunton Creek Retail

### Location

1101 Bunton Creek Rd.  
Kyle, TX, 78640

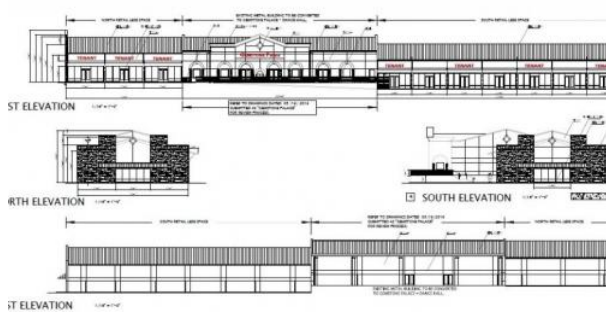
### Clay Bryne

Keller Williams Realty  
512-769-2251

<https://www.loopnet.com/Listing/1101-Bunton-Creek-Rd-Kyle-TX/10773565/>

### Secondary Contact

## Photos



# Bunton Creek Retail

Location

map

Image not found

<http://maps.google.com/maps/api/staticmap?center=30.003859,-97.854329&markers=30.003859,-97.854329&zoom=12&size=657x475>

## Bunton Creek Retail

### Additional Information

Multiple spaces available and plenty of parking. Located next to Seton Medical Center Hays County in Kyle at Dacy

Lane and Goforth Road.

Event center anchor tenant; great road and foot traffic. Great space options for restaurant, professional services, medical; end cap could be gas station/convenience store. Call for details. Est. 24,500 sq.ft.

TI negotiable; triple net lease estimated at \$3/ft/yr

## Bunton Creek Retail

### Property Details

**Property For:** Lease

**Zoning Type:** Retail/Office

**Rail Access:** No

**Building Type:** Commercial

**Nearest Interstate Distance:**

**Retail Sq. Footage:** 24,500 SF

**Space Divisible To:** 850 SF

**Total Square Footage:** 24,500 SF

**Year Built:** 2018

**Primary Anchor Tenant:** Gemstone Palace

**Date Available:** August 27, 2019

### Lease Pricing Option

**Cost Description:** \$20/SF/Yr